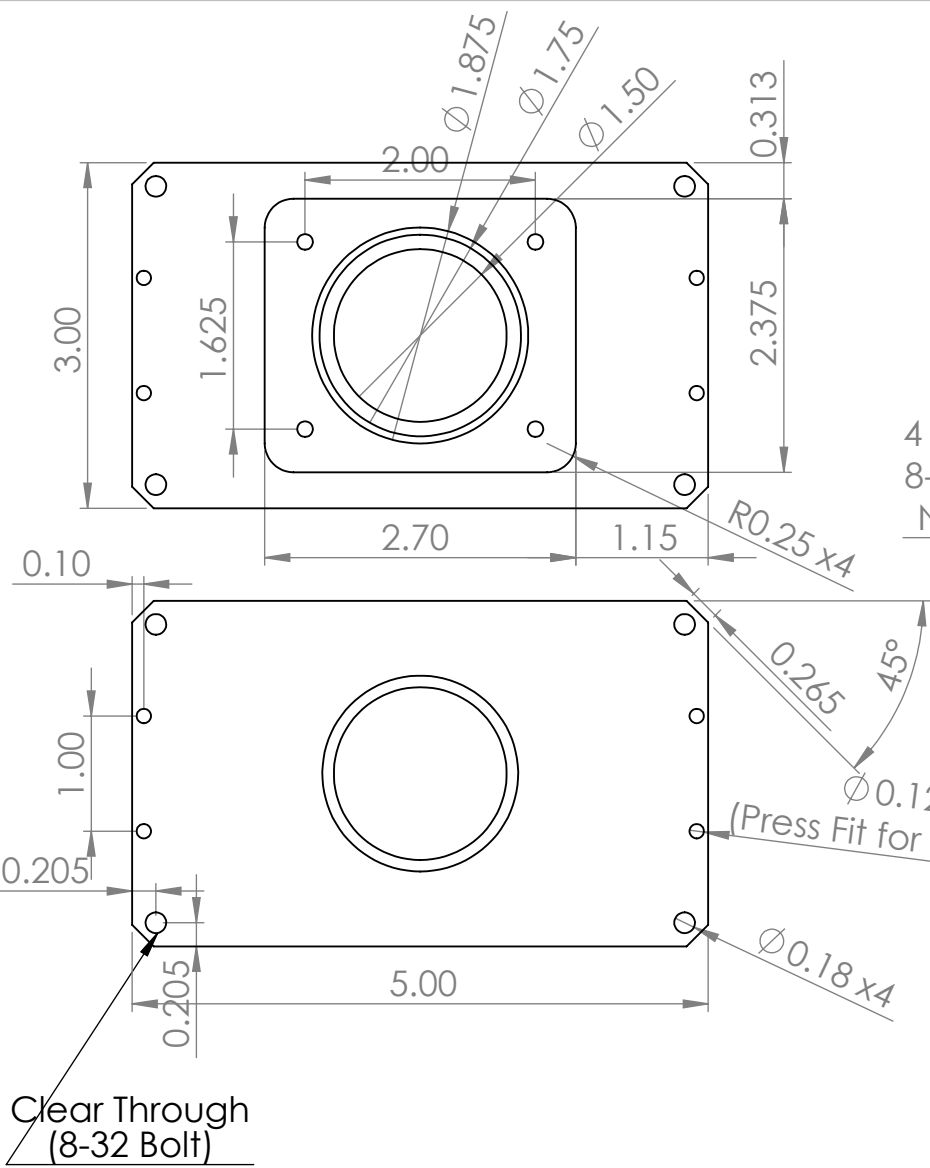
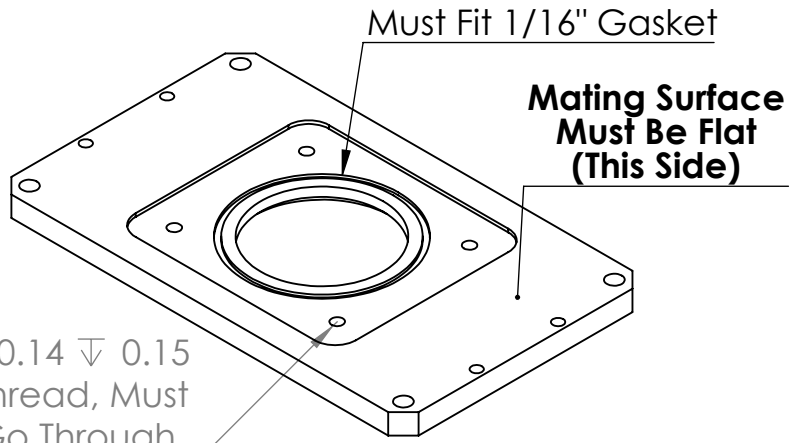


B  
A

1

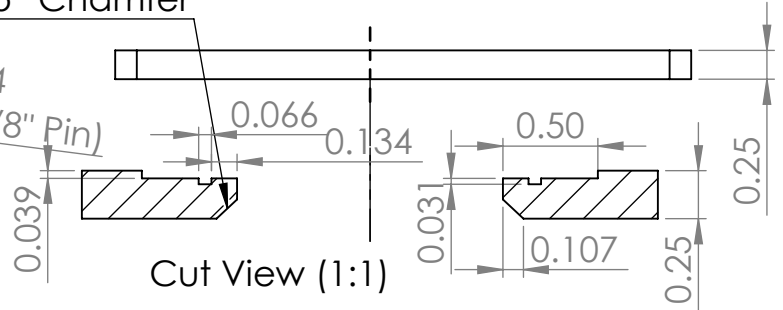


4 x  $\phi 0.14 \nabla 0.15$   
8-32 Thread, Must  
Not Go Through



Break All Relevant Edges

45° Chamfer



Clear Through  
(8-32 Bolt)

	NAME	DATE
DRAWN	Kiva M.	12-5-24
CHECKED		
ENG APPR.		
MFG APPR.		
Q.A.		
COMMENTS:		

TITLE:  
**Window Module**

SIZE	DWG. NO.	REV
<b>A</b>		<b>2</b>
SCALE: 3:5	WEIGHT:	SHEET 1 OF 6

2

1

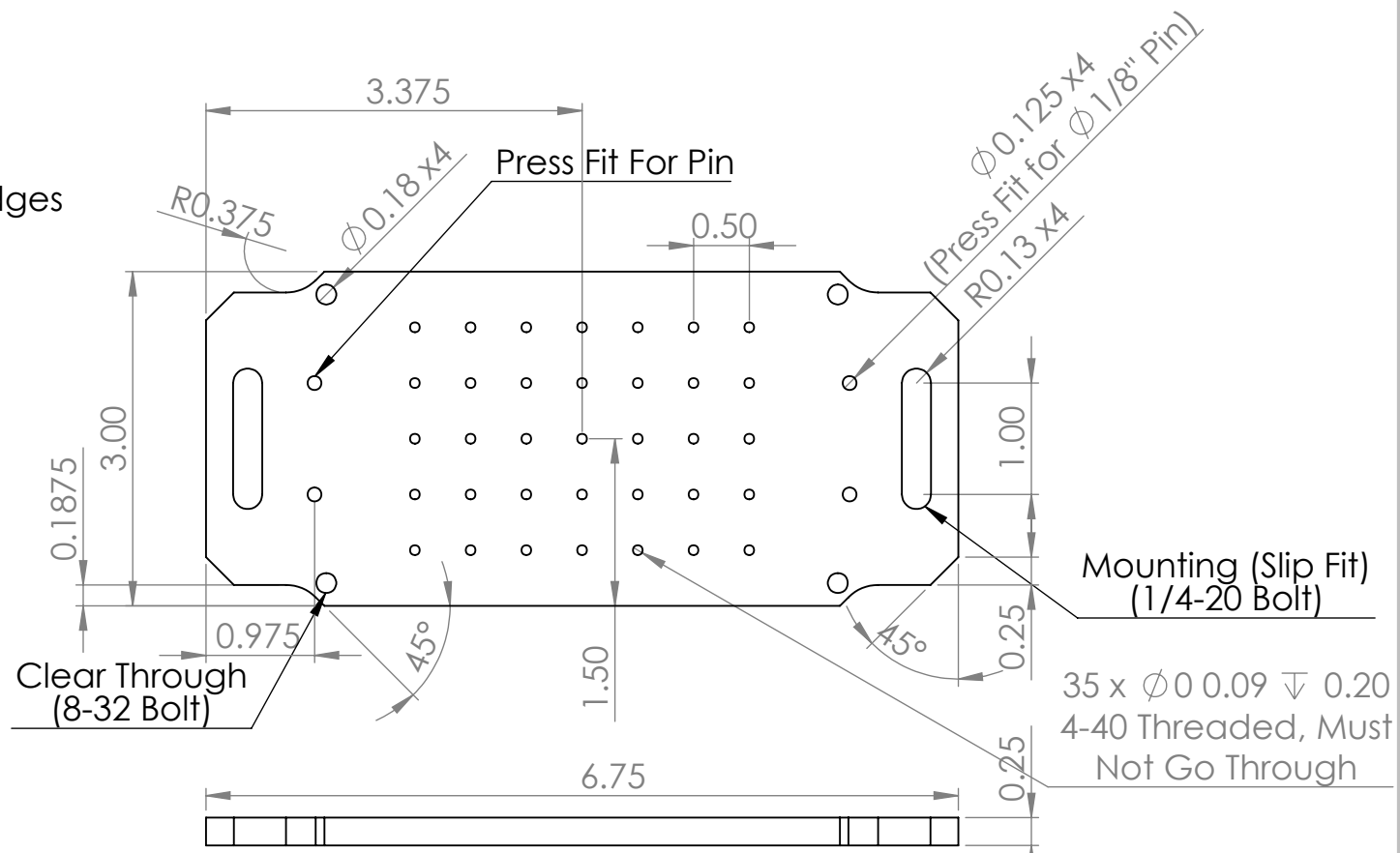
2

1

B

B

Break All Relevant Edges



Mounting (Slip Fit)  
(1/4-20 Bolt)

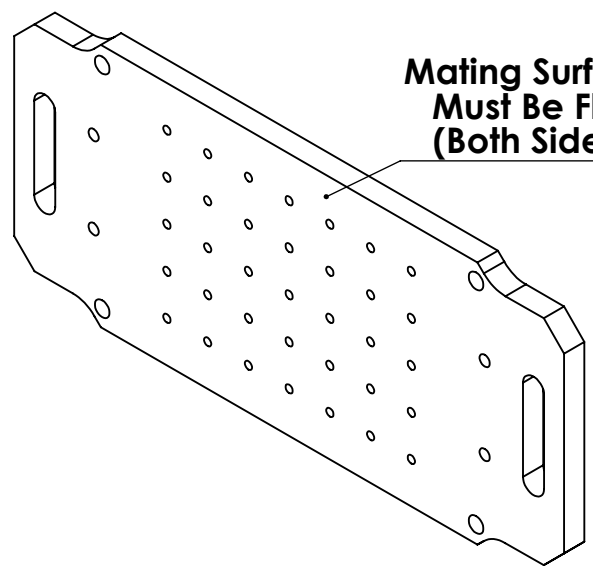
Clear Through  
(8-32 Bolt)

35 x  $\phi 0.09 \nabla 0.20$   
4-40 Threaded, Must  
Not Go Through

Mating Surface  
Must Be Flat  
(Both Sides)

A

A



	NAME	DATE
DRAWN	Kiva M.	12-5-24
CHECKED		
ENG APPR.		
MFG APPR.		
Q.A.		

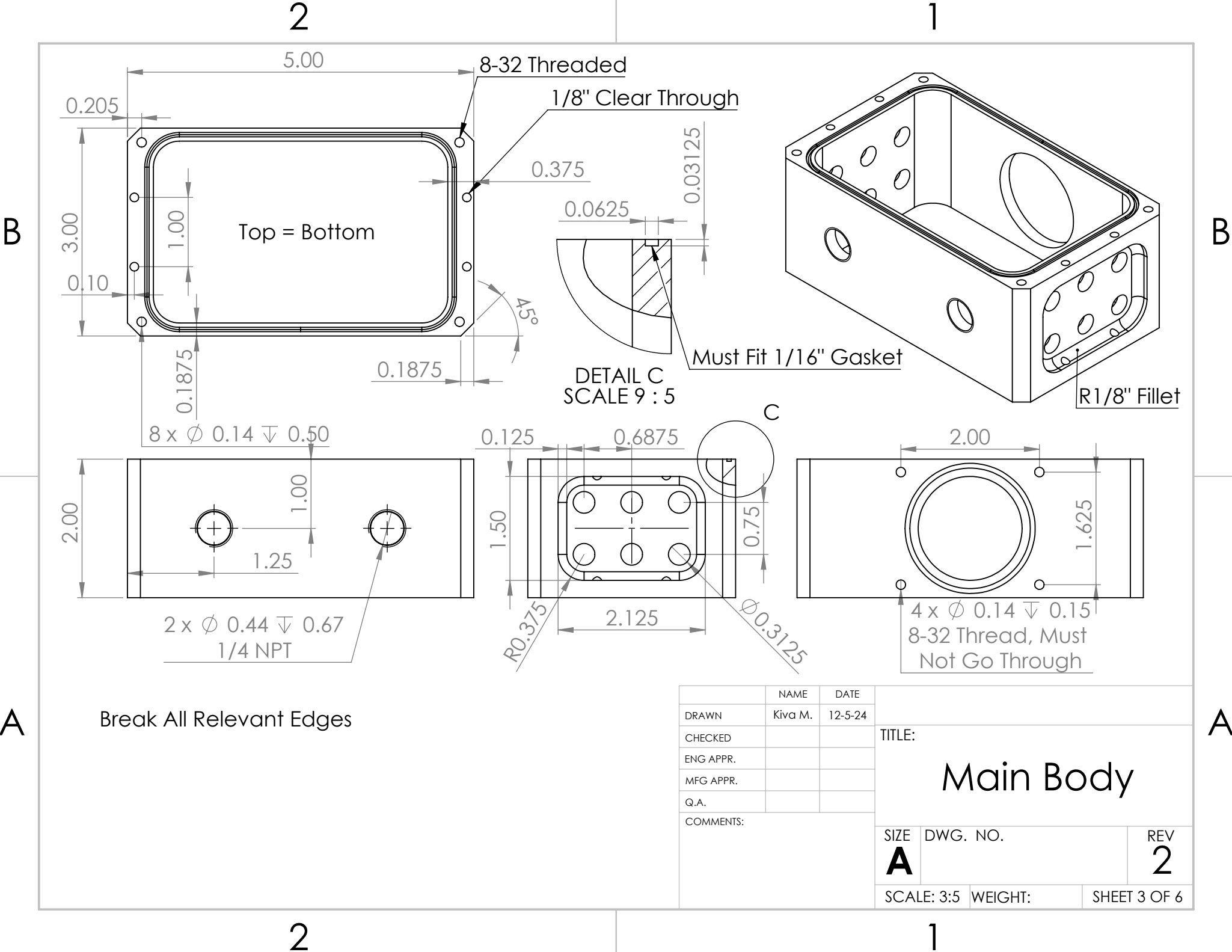
TITLE:  
**Breadboard  
Module**

COMMENTS:

SIZE <b>A</b>	DWG. NO.	REV <b>2</b>
SCALE: 3:5	WEIGHT:	SHEET 2 OF 6

2

1



B

B

A

A

2

1

2

1

Top = Bottom

DETAIL C  
SCALE 9 : 5

Must Fit 1/16" Gasket

R1/8" Fillet

Break All Relevant Edges

TITLE:  
**Main Body**

	NAME	DATE
DRAWN	Kiva M.	12-5-24
CHECKED		
ENG APPR.		
MFG APPR.		
Q.A.		
COMMENTS:		

SIZE <b>A</b>	DWG. NO.	REV <b>2</b>
SCALE: 3:5	WEIGHT:	SHEET 3 OF 6

2

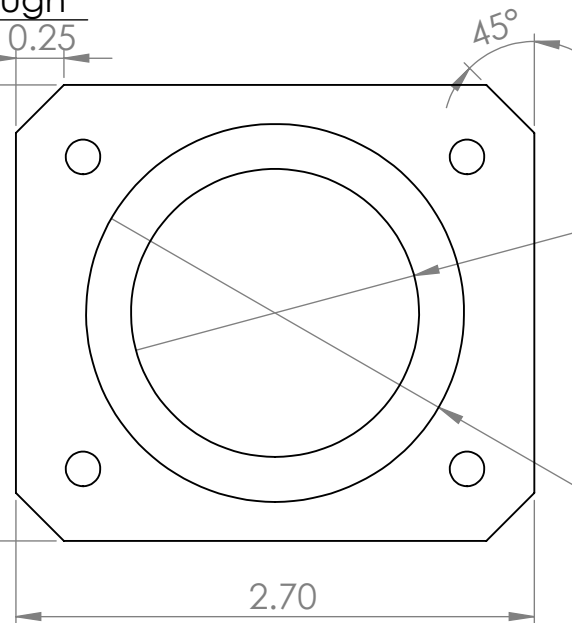
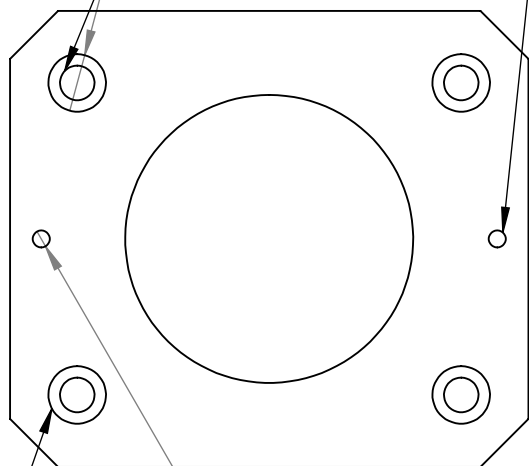
1

Clear Through (8-32)  $\phi 0.18$  THRU  $\phi 0.30 \nabla 0.10$

4-40 Thread, Must Not Go Through

B

B



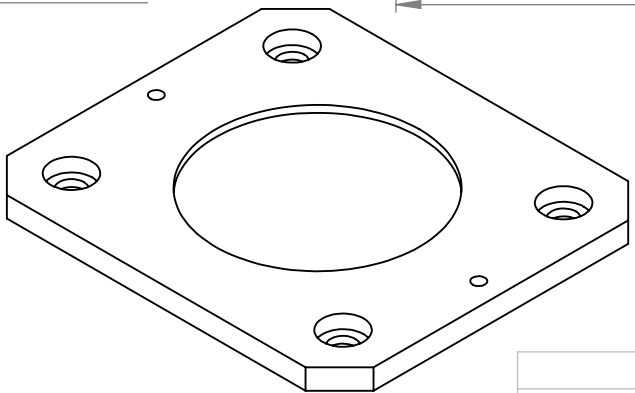
$\phi 1.50$  (Through Hole)

$\phi 1.969$

2 x  $\phi 0.09 \nabla 0.10$

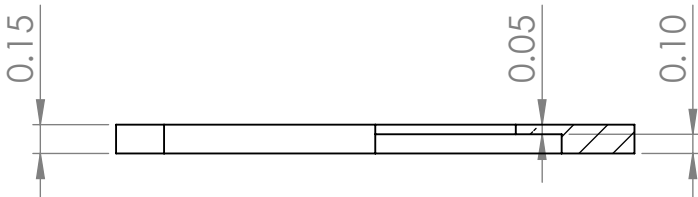
Countersink

Break All Relevant Edges



A

A



	NAME	DATE
DRAWN	Kiva M.	9-25-24
CHECKED		
ENG APPR.		
MFG APPR.		
Q.A.		
COMMENTS:		

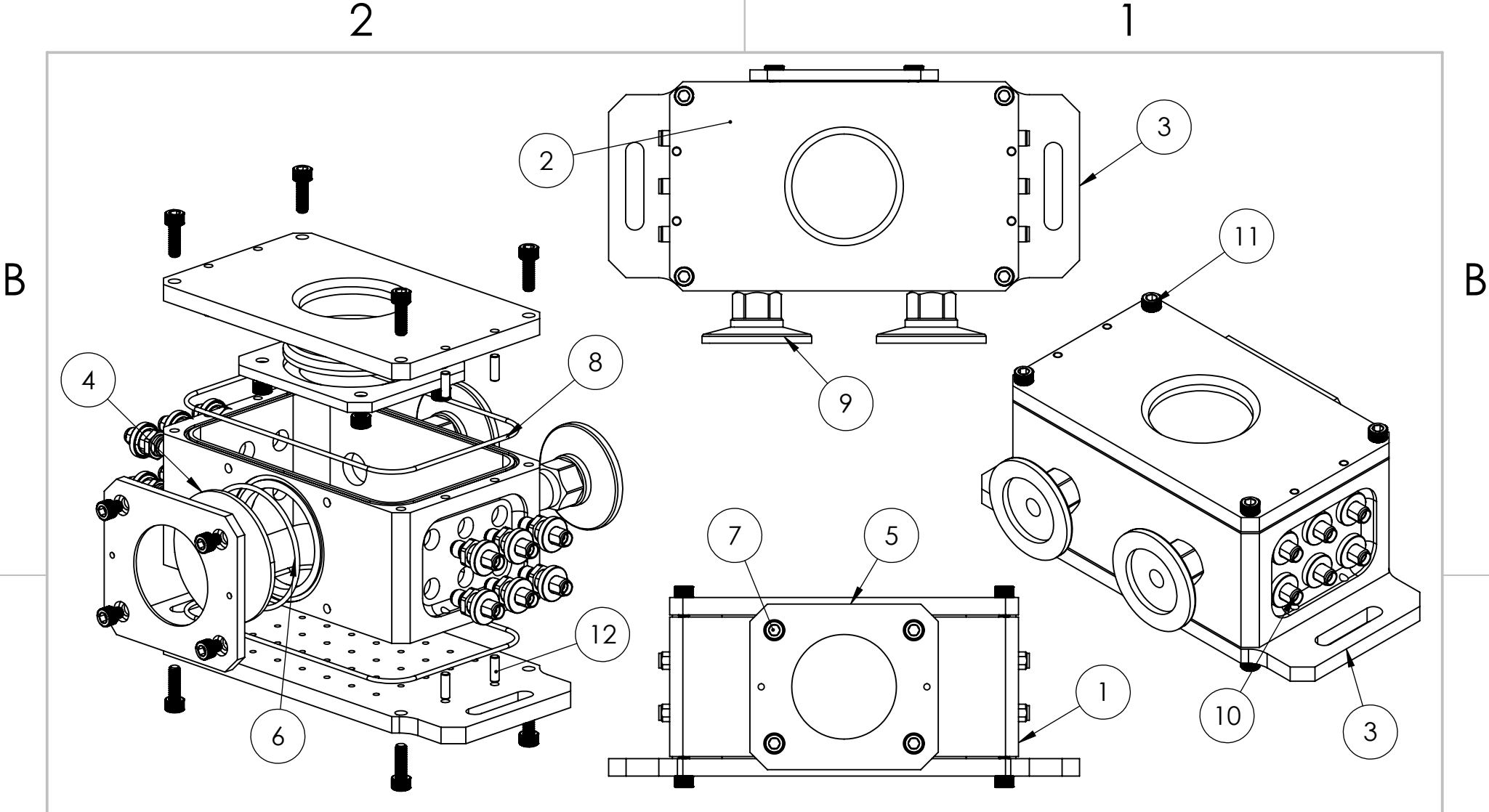
TITLE:  
**Window Frame**

SIZE	DWG. NO.	REV
<b>A</b>		<b>1</b>

SCALE: 1:1	WEIGHT:	SHEET 4 OF 6
------------	---------	--------------

2

1



Break All Relevant Edges

	NAME	DATE
DRAWN	Kiva M.	9-27-24
CHECKED		
ENG APPR.		
MFG APPR.		
Q.A.		

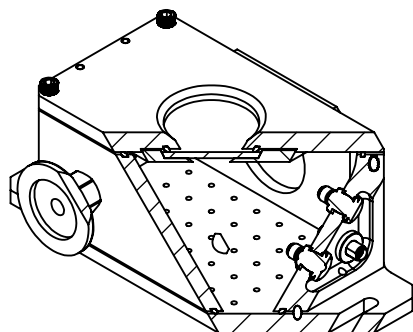
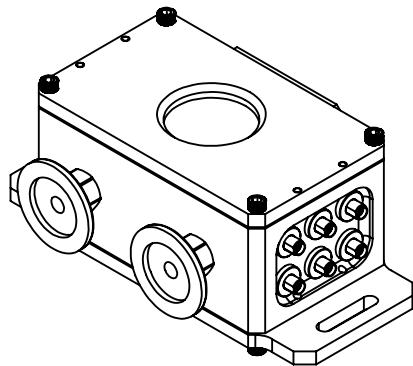
COMMENTS:

TITLE: <b>Overview</b>		
SIZE <b>A</b>	DWG. NO.	REV <b>1</b>
SCALE: 1:2	WEIGHT:	SHEET 5 OF 6

2

1

B



B

ITEM NO.	PART NUMBER	DESCRIPTION	QTY.
1	Main	Main Chamber Body	1
2	Window Module	Top of Chamber	1
3	Bread Board Module	Bottom of Chamber has .5" Grid	1
4	Window 50x2mm (edmund_36-946).step		2
5	Window Frame	Clamps window & gasket	2
6	9464K311	Viton O-Ring 1/16" Width, 1.879" OD, & 1.739 ID	2
7	92196A189	8-32 3/16" Bolt	8
8	Square Gasket	Viton O-Ring 1/16" Width, 4.379" OD, & 4.239 ID	2
9	P101369	Adapter KF-25 to 1/4 in. NPT-Male, ISO-KF Flange Size NW-25, Stainless Steel	2
10	PE1358.step		12
11	92196A194	8-32 1/2" Bolt	8
12	Alignment Pin	3/8" $\phi$ 1/8" Pin (Presses into modules, slips into main)	8

A

	NAME	DATE	TITLE:  <b>BOM</b>														
DRAWN	Kiva M.	12-5-24				<table border="1"> <tr> <td>SIZE</td> <td>DWG. NO.</td> <td>REV</td> </tr> <tr> <td><b>A</b></td> <td></td> <td><b>2</b></td> </tr> <tr> <td>SCALE: 1:3</td> <td>WEIGHT:</td> <td>SHEET 6 OF 6</td> </tr> </table>			SIZE	DWG. NO.	REV	<b>A</b>		<b>2</b>	SCALE: 1:3	WEIGHT:	SHEET 6 OF 6
SIZE	DWG. NO.	REV															
<b>A</b>		<b>2</b>															
SCALE: 1:3	WEIGHT:	SHEET 6 OF 6															
CHECKED																	
ENG APPR.																	
MFG APPR.																	
Q.A.																	
COMMENTS:																	

A

2

1